

Braiding Conduit

A9133

- IP50
- Type A2012 (galvanized steel core) with #304 stainless steel braiding
- Good flexibility
- Not liquid-tight



Features

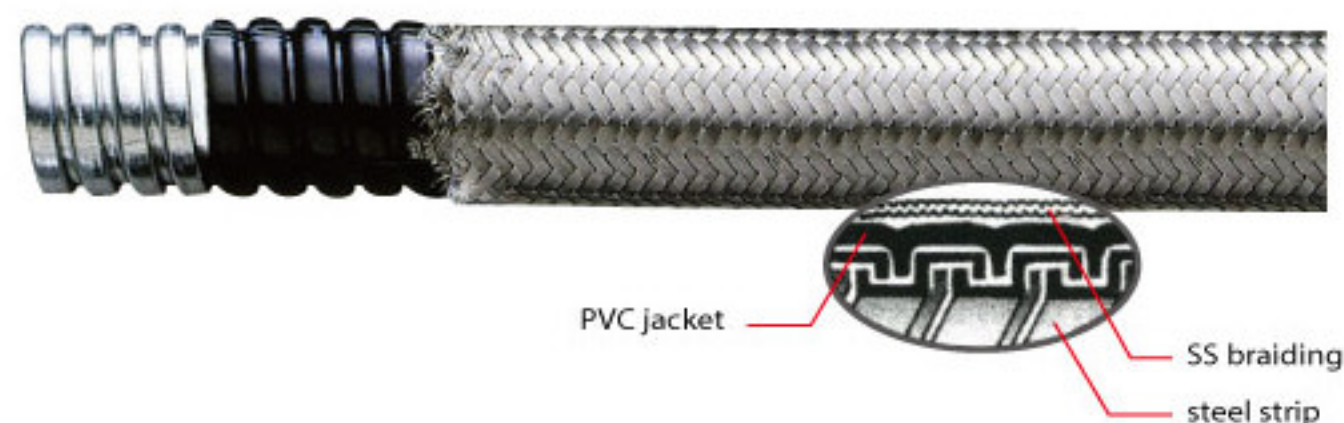
- Enhanced safety, prevents spark, welding slag, hot swarf and abrasion.
- Braiding can be applied to all BLISS products, by request

Application:

- Hazardous area
- A9133: Class 3 Division 1, Class 3 Division 2 ; A9333, A9533 : Class 2 Division 1, Class 2 Division 2, Class 3 Division 1, Class 3 Division 2
- Machine tools, motor lead connections

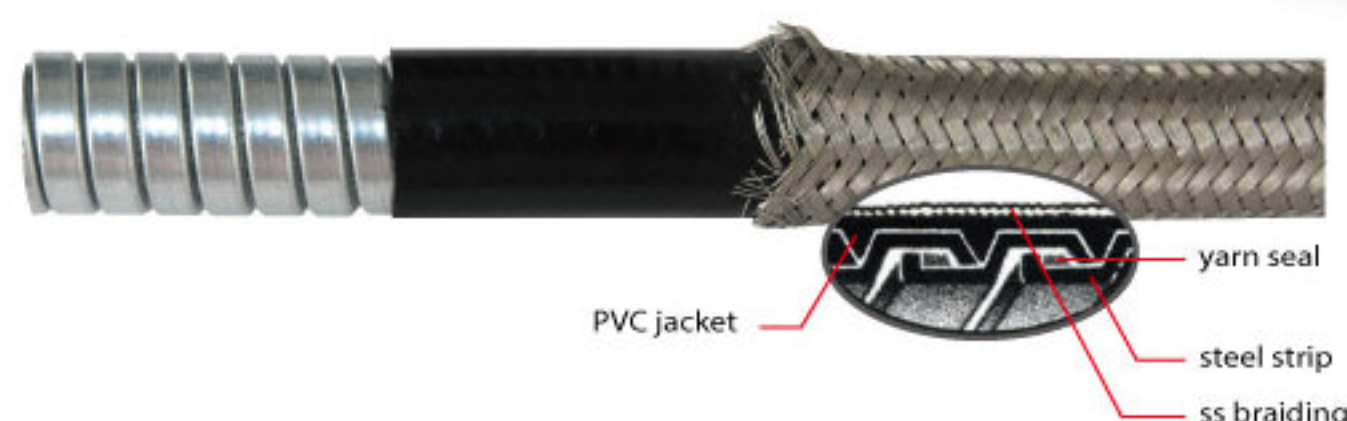
A9333

- IP65
- Type A2017 (galvanized steel core with PVC jacket) with #304 stainless steel braiding
- Good flexibility
- Liquid-tight



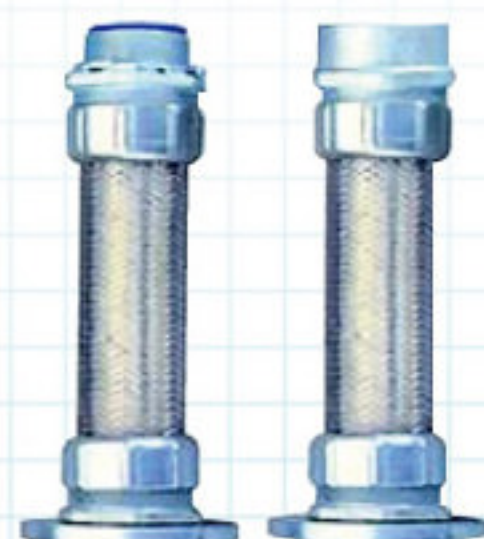
A9533

- IP65
- Type A2067 (galvanized steel core with PVC jacket) with #304 stainless steel braiding
- High tensile
- Liquid-tight

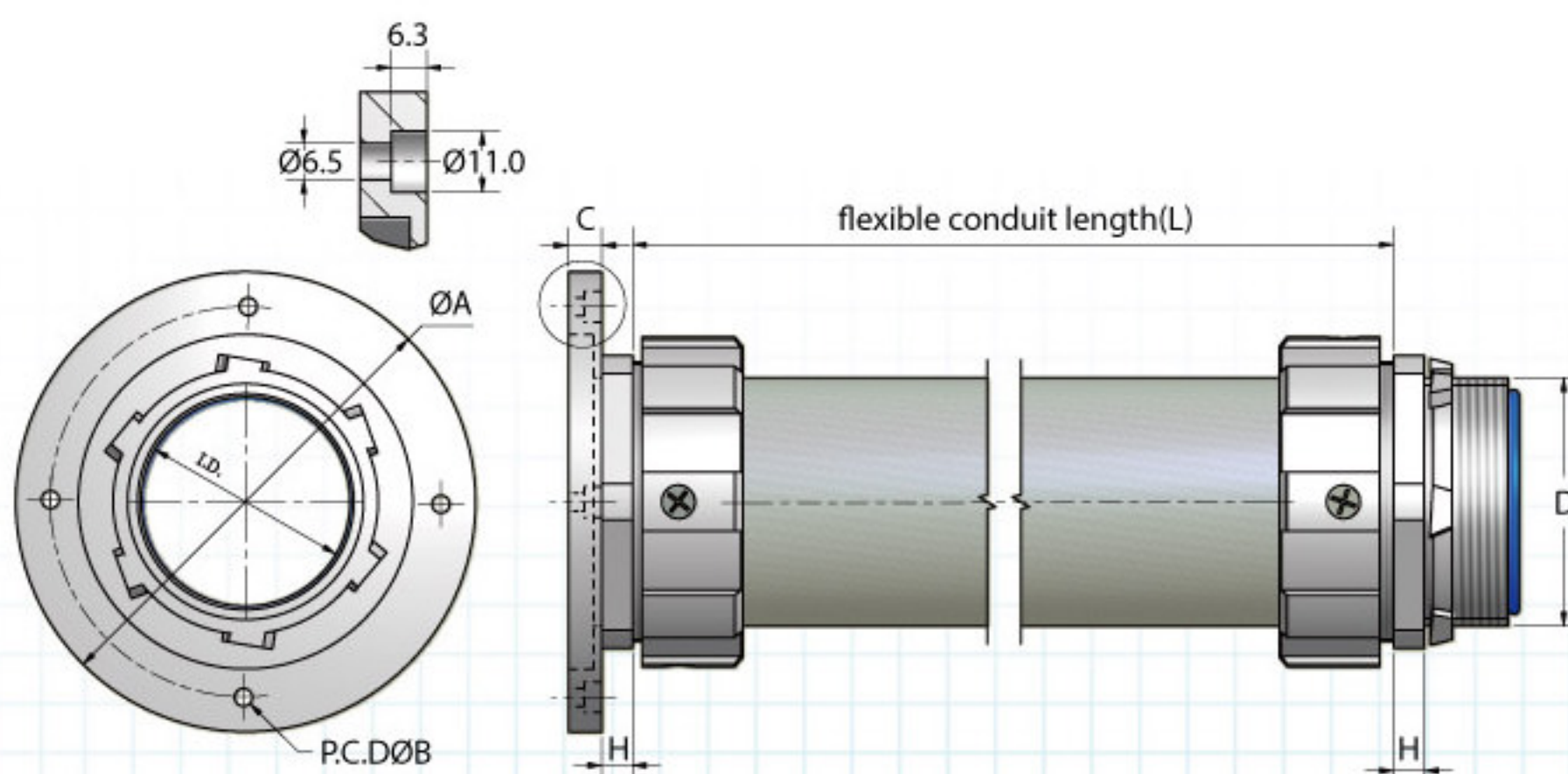


Flange

- A2066 inner core (interlocked) with #304 Stainless steel braiding.
- The suspension flange is assembled with flexible braiding conduit and the 355° rotation angle offers wide operating direction.
- For control panel of suspension machine.



H9033



| Trade Size (inch) | Catalog Number | Dimension (mm) | | | | | D* | Bolt | Max. Bearing Weight (kgf) |
|-------------------|----------------|----------------|-------|-------|------|------|-----------------------|--------|---------------------------|
| | | I.D. | A | B | C | H | | | |
| 1-1/2" | H90331400 | 38.0 | 100.0 | 80.0 | 10.0 | 7.0 | NPT 1-1/2 | M6 x 4 | 200 |
| 2" | H90332000 | 49.5 | 120.0 | 95.0 | 10.0 | 7.0 | NPT 2 | M6 x 4 | 200 |
| 2-1/2" | H90332400 | 60.0 | 145.0 | 120.0 | 12.0 | 11.0 | NPT 2-1/2 PT 2-1/2 | M6 x 4 | 400 |
| 3" | H90333000 | 75.0 | 165.0 | 140.0 | 12.0 | 11.0 | NPT 3 PT 3 | M6 x 4 | 400 |

* Female connector available

Braiding Conduit

| Trade Size (inch) | Catalog Number | Min. I.D. (mm) | Max. I.D. (mm) | Min. O.D. (mm) | Max. O.D. (mm) | Min. Bending Radius (mm) | Packing (m) |
|-------------------|----------------|----------------|----------------|----------------|----------------|--------------------------|-------------|
| 5/16" | A91330200 | 10.3 | 10.8 | 14.3 | 14.8 | 30 | 50 |
| | A93330200 | 10.3 | 10.8 | 15.3 | 15.8 | 55 | 50 |
| | A95330200 | 9.5 | 10.0 | 15.5 | 16.0 | 65 | 50 |
| 3/8" | A91330300 | 12.3 | 12.8 | 16.6 | 17.2 | 35 | 50 |
| | A93330300 | 12.3 | 12.8 | 17.7 | 18.2 | 60 | 50 |
| | A95330300 | 12.3 | 12.8 | 18.5 | 19.0 | 75 | 50 |
| 1/2" | A91330400 | 15.8 | 16.3 | 20.0 | 20.7 | 40 | 50 |
| | A93330400 | 15.8 | 16.3 | 21.2 | 21.7 | 75 | 50 |
| | A95330400 | 15.8 | 16.3 | 21.8 | 22.3 | 95 | 50 |
| 3/4" | A91330600 | 20.8 | 21.3 | 25.4 | 26.1 | 50 | 50 |
| | A93330600 | 20.8 | 21.3 | 26.6 | 27.1 | 90 | 50 |
| | A95330600 | 20.7 | 21.2 | 27.2 | 27.7 | 115 | 30 |
| 1" | A91331000 | 26.4 | 27.0 | 31.6 | 32.2 | 75 | 30 |
| | A93331000 | 26.4 | 27.0 | 32.6 | 33.2 | 115 | 30 |
| | A95331000 | 26.2 | 26.8 | 33.7 | 34.4 | 180 | 20 |
| 1-1/4" | A91331200 | 34.7 | 35.4 | 40.5 | 41.2 | 85 | 25 |
| | A93331200 | 34.7 | 35.4 | 41.7 | 42.4 | 160 | 25 |
| | | | | | | | |
| 1-1/2" | A91331400 | 40.1 | 40.7 | 46.4 | 47.0 | 110 | 20 |
| | A93331400 | 40.1 | 40.7 | 47.9 | 48.5 | 185 | 20 |
| | | | | | | | |
| 2" | A91332000 | 51.3 | 51.9 | 57.6 | 58.2 | 125 | 15 |
| | A93332000 | 51.3 | 51.9 | 59.6 | 60.2 | 230 | 15 |
| | | | | | | | |
| 2-1/2" | A91332400 | 63.0 | 63.6 | 72.2 | 72.8 | 145 | 10 |
| | A93332400 | 63.0 | 63.6 | 73.8 | 74.4 | 250 | 10 |
| | | | | | | | |
| 3" | A91333000 | 78.0 | 78.7 | 87.2 | 87.9 | 180 | 10 |
| | A93333000 | 78.0 | 78.7 | 89.2 | 89.9 | 300 | 10 |
| | | | | | | | |
| 4" | A91334000 | 101.6 | 102.6 | 110.5 | 111.5 | 230 | 5 |
| | A93334000 | 101.6 | 102.6 | 113.2 | 114.3 | 400 | 5 |
| | | | | | | | |